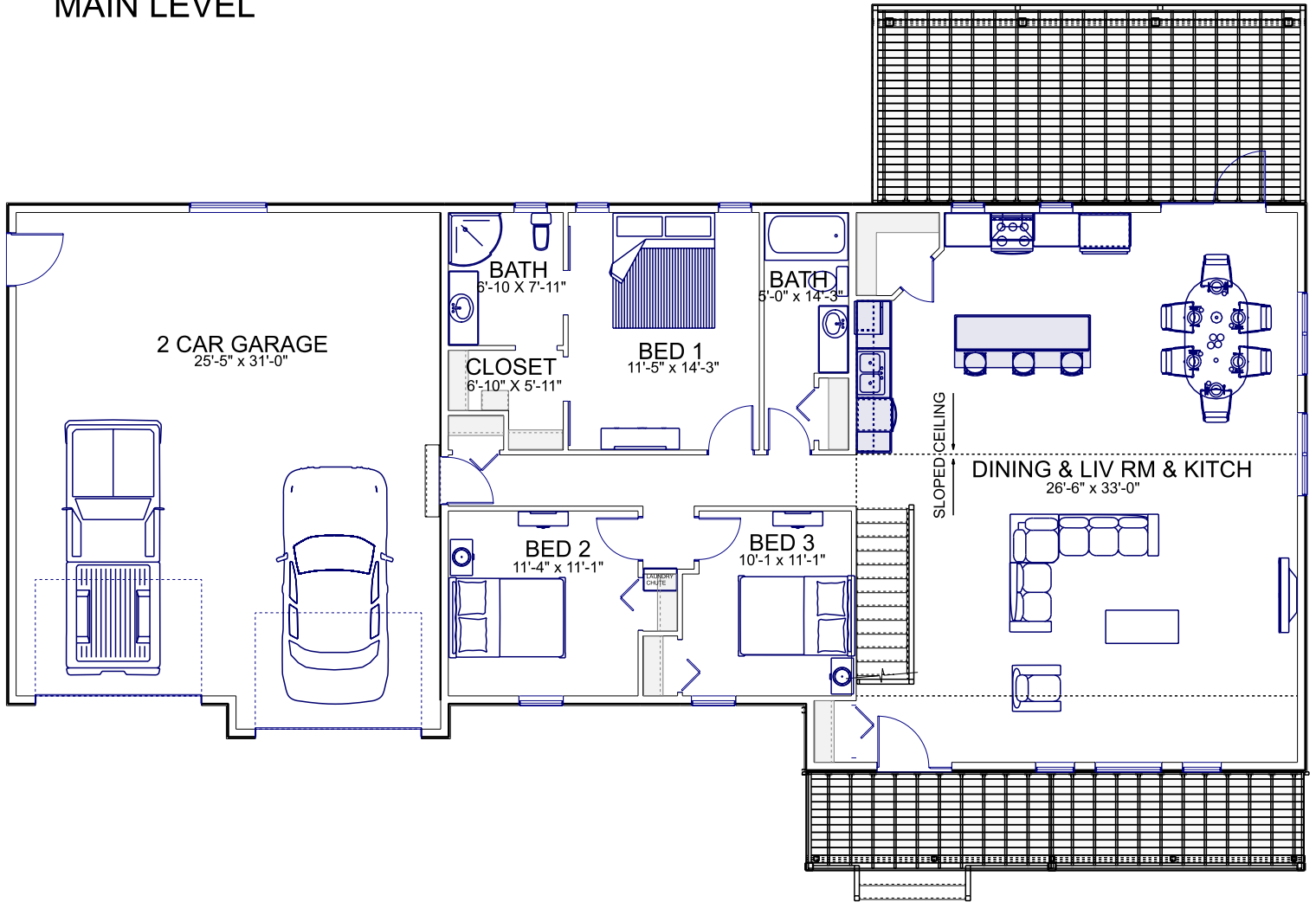
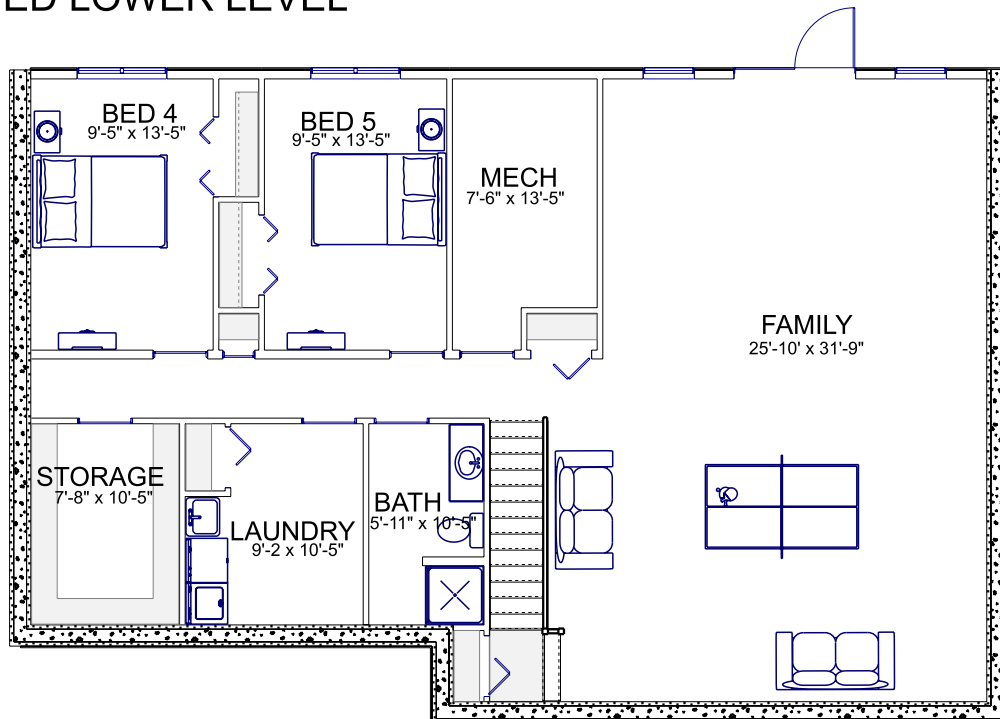


Aavaas

MAIN LEVEL



FINISHED LOWER LEVEL



ABOUT THIS PLAN

- With 3 bedrooms on the main level, this home is suitable for a young family. Two more bedrooms in the lower level are ideal as the children get older
- Open floor plan with cathedral ceiling in kitchen, dining, & living room
- Walk out basement allows for large windows and lots of light in the lower level
- Open stairway off main living area helps connect lower level with main level
- Large laundry room in lower level
- Ample storage space in lower level
- Large 2 car garage with room to have lots of storage or a small workshop

Plan Details

Square Footage Breakdown

| | |
|---------------------------|--------------|
| Total Heated Area: | |
| Main Level: | 1680 sq. ft. |
| Lower Level: | 1680 sq. ft. |

Beds/Baths

| | |
|------------------------------------|---|
| Bedrooms Main Level: | 3 |
| Bedrooms Lower Level: | 2 |
| Full Bathrooms Main Level: | 2 |
| Half Bathrooms Main Level: | 0 |
| Full Bathrooms Lower Level: | 1 |
| Half Bathrooms Lower Level: | 0 |

Dimensions

| | |
|---------------|--------|
| Width: | 78'-0" |
| Depth: | 34'-0" |

Garage

| | |
|------------------|-------------|
| Type: | Attached |
| Area: | 806 sq. ft. |
| Details: | 2 cars |
| Location: | End |

Foundation Type

| | |
|-----------------------------|-----------------|
| Standard Foundation: | Full height ICF |
|-----------------------------|-----------------|

Exterior Walls

| | |
|----------------------|-----|
| House Walls: | 2x6 |
| Garage Walls: | 2x6 |

Ceiling Heights

| | |
|---------------------|-------|
| Main Level: | 8'-0" |
| Lower Level: | 9'-0" |
| Garage: | 9'-5" |

Roof

| | |
|-----------------------|---------|
| Primary Pitch: | 6 on 12 |
|-----------------------|---------|

Cost to purchase 5 print copies and a pdf copy \$1100.00

Price includes shipping to US and Canada.

Taxes, if applicable, extra.

Possible Revisions to this plan:

- Reverse plan
- Delete garage
- Eliminate basement walkout for flat building lot